

NEWGEN EQUITY LONG-SHORT FUND LP CLASS F (NGLS)

SEPTEMBER 2025 NEWSLETTER

NEWGEN

ASSET MANAGEMENT

FUND OVERVIEW

The NewGen Equity Long-Short LP Class F Fund (NGLS) seeks to balance steady risk-adjusted performance with capital preservation, in order to deliver a unique return stream that can provide real diversification benefits. The NGLS aims to achieve this by targeting persistent structural inefficiencies that exist in the equity markets and are particularly prevalent in Canada. In order to minimize downside volatility, the Fund adheres to disciplined risk management targets, with a highly liquid portfolio and defensive exposures (market and sector). The Fund's active management style is based on an investment process that merges both trading and fundamental analysis and sources Alpha (excess return) from stock-specific ideas with catalysts (i.e. corporate updates, financings, index addition/deletions, clean-ups/blocks, strategic reviews, M&A, etc) over a short and medium-term time horizon. The portfolio is typically concentrated around 40-60 positions that are balanced between both longs and shorts. Through this portfolio composition, net exposures generally range from 20-40%, thereby minimizing Beta (systematic risk).

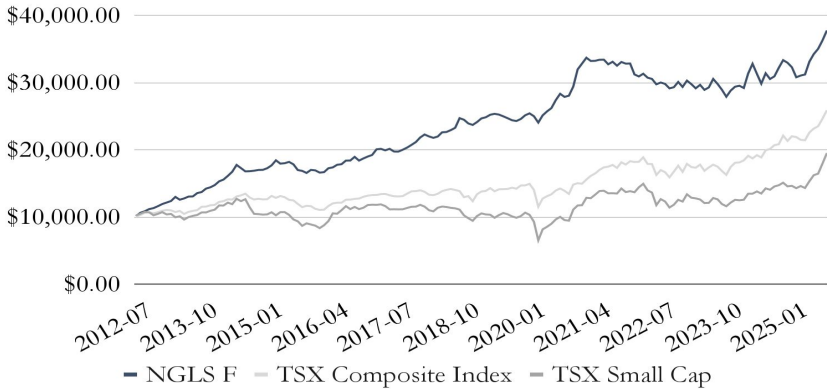
MONTHLY COMMENTARY

The NGLS LP Class F returned 4.06% in September (14.57% YTD). September saw North American markets printing new highs, defying what is typically a softer seasonal period for equities. The TSX led the way, surging 5.1% to close above 30,000 for the first time, and delivering its best YTD performance since 2009. The rally was powered by outsized performance in gold miners and materials, lifting its share of TSX market capitalization to a decade high. In the US, enthusiasm for tech offset worries about tariffs and elevated valuations, to propel the market's fifth consecutive month in the green. Both the Federal Reserve and Bank of Canada delivered quarter-point rate cuts in September. Despite caution surrounding trade tensions, persisting inflation and the labour market, optimism surrounding corporate earnings, efficiency gains from AI and the state of the consumer remains. In commodities, gold finished at a new all-time high of US\$3,859/oz. Copper finished the month higher while oil was relatively unchanged. The market's risk-on appetite was evident with Bitcoin advancing 6% in the month. The US dollar and yields were relative unchanged. Across the TSX, Materials (18.7%), Energy (+4.8%) and Financials (+4.4%) led, while Communication Services (-3.1%), Real Estate (-1.3%) and Industrials (-1%) lagged. Some noteworthy winners from the month included: (1) long Blackberry Ltd (BB-TSX), which reported a beat on its quarterly earnings and an increase to its annual guidance; (2) long Capstone Copper (CS-TSX), which appreciated in response to a supply disruption in the copper market along with increasing M&A among copper companies; and, (3) long Kraken Robotics (PNG-TSX), whose core product offering is expected to be included in a large contract awarded by the Australian Navy in the month.

MONTHLY PORTFOLIO RETURNS

		Jan	Feb	Mar	Apr	May	Jun	Jul	Aug	Sep	Oct	Nov	Dec	Year
2012	NGLS LP Class F							1.33%	4.94%	2.12%	2.93%	1.32%	2.52%	16.10%
	TSX Composite Index							0.59%	2.44%	3.08%	0.86%	-1.48%	1.59%	7.22%
2013	NGLS LP Class F	2.78%	1.86%	1.85%	4.97%	-3.23%	1.52%	2.15%	0.18%	3.82%	1.11%	3.74%	1.38%	24.22%
	TSX Composite Index	2.02%	1.08%	-0.56%	-2.30%	1.56%	-4.12%	2.95%	1.34%	1.05%	4.49%	0.26%	1.69%	9.55%
2014	NGLS LP Class F	2.24%	3.81%	1.71%	3.55%	3.78%	6.09%	-2.65%	-2.82%	0.14%	0.44%	0.66%	0.10%	18.01%
	TSX Composite Index	0.54%	3.76%	0.88%	2.21%	-0.33%	3.71%	1.22%	1.92%	-4.26%	-2.32%	0.90%	-0.76%	7.42%
2015	NGLS LP Class F	1.41%	2.46%	4.25%	-2.66%	0.33%	1.09%	-1.99%	-4.78%	-0.72%	-1.80%	2.71%	-0.40%	-0.46%
	TSX Composite Index	0.28%	3.82%	-2.18%	2.16%	-1.38%	-3.07%	-0.58%	-4.21%	-3.98%	1.67%	-0.44%	-3.41%	-11.09%
2016	NGLS LP Class F	-1.97%	0.42%	3.50%	0.72%	2.25%	0.46%	3.03%	0.04%	2.96%	-2.90%	1.71%	1.53%	12.16%
	TSX Composite Index	-1.44%	0.30%	4.93%	3.39%	0.82%	-0.01%	3.68%	0.10%	0.88%	0.42%	2.00%	1.36%	17.51%
2017	NGLS LP Class F	1.21%	4.36%	0.37%	-1.08%	1.11%	-1.99%	-0.04%	1.41%	1.59%	1.98%	2.04%	3.24%	14.95%
	TSX Composite Index	0.64%	0.09%	0.96%	0.25%	-1.52%	-1.09%	-0.25%	0.45%	2.78%	2.50%	0.26%	0.88%	6.03%
2018	NGLS LP Class F	2.01%	-1.28%	-0.96%	0.89%	2.86%	0.22%	1.24%	1.50%	6.15%	-0.95%	-2.27%	-0.91%	8.53%
	TSX Composite Index	-1.59%	-3.19%	-0.49%	1.57%	2.91%	1.35%	0.96%	-1.04%	-1.17%	-6.51%	1.13%	-5.76%	-11.64%
2019	NGLS LP Class F	1.82%	2.23%	0.69%	1.50%	0.55%	-0.45%	-1.03%	-1.12%	-0.47%	1.25%	2.23%	6.04%	
	TSX Composite Index	8.50%	2.95%	0.64%	2.97%	-3.28%	2.15%	0.15%	0.22%	1.32%	-1.05%	3.38%	0.14%	19.13%
2020	NGLS LP Class F	1.14%	-1.67%	-3.77%	4.46%	2.34%	1.90%	4.53%	3.45%	-1.64%	0.65%	4.83%	8.68%	27.16%
	TSX Composite Index	1.49%	-6.09%	-17.74%	10.48%	2.79%	2.12%	4.22%	2.14%	-2.38%	-3.35%	10.33%	1.41%	2.17%
2021	NGLS LP Class F	2.71%	2.66%	-1.43%	0.07%	0.48%	0.04%	-2.06%	1.16%	-1.77%	1.69%	-0.74%	0.06%	2.76%
	TSX Composite Index	-0.55%	4.17%	3.55%	2.18%	3.26%	2.20%	0.61%	1.45%	-2.49%	4.82%	-1.79%	2.72%	21.74%
2022	NGLS LP Class F	-4.96%	-0.96%	1.32%	-1.89%	-0.60%	-2.62%	0.90%	-0.69%	-2.22%	0.57%	2.69%	-2.46%	-10.61%
	TSX Composite Index	-0.59%	0.13%	3.62%	-5.15%	-0.16%	-9.01%	4.41%	-1.84%	-4.59%	5.32%	5.29%	-5.22%	-8.66%
2023	NGLS LP Class F	3.19%	-1.72%	-2.10%	1.78%	-2.52%	1.26%	4.30%	-2.41%	-2.93%	-3.58%	3.27%	2.01%	0.10%
	TSX Composite Index	7.13%	-2.63%	-0.60%	2.67%	-5.16%	2.98%	2.34%	-1.62%	-3.70%	-3.42%	7.22%	3.57%	8.12%
2024	NGLS LP Class F	0.48%	-1.13%	7.39%	4.60%	-4.56%	-4.66%	5.19%	-2.73%	1.30%	4.11%	3.53%	-1.16%	12.14%
	TSX Composite Index	0.30%	1.63%	3.76%	-2.04%	2.55%	-1.77%	5.65%	1.02%	2.80%	0.65%	6.17%	-3.59%	17.99%
2025	NGLS LP Class F	-2.03%	-4.62%	0.83%	0.51%	6.11%	3.41%	2.28%	3.59%	4.06%				14.57%
	TSX Composite Index	3.26%	-0.55%	-1.87%	-0.30%	5.37%	2.61%	1.50%	4.79%	5.11%				21.41%

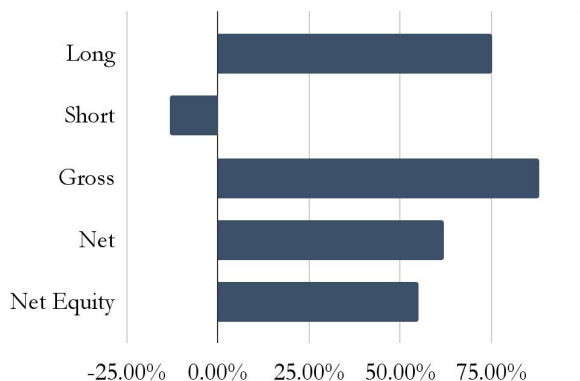
GROWTH OF \$10,000 INVESTED SINCE INCEPTION



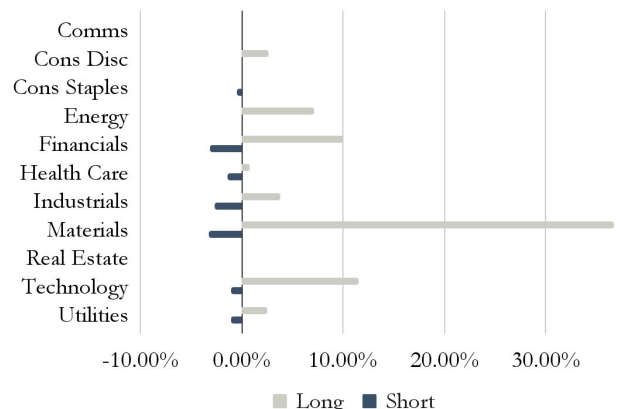
DATA SINCE INCEPTION

	Fund	TSX
Annualized Performance	10.55%	7.44%
Year-To-Date	14.57%	21.41%
One-Year	22.06%	25.09%
Three-Year	9.01%	17.63%
Five-Year	6.26%	13.24%
Ten-Year	8.39%	8.48%
Standard Deviation	8.83%	11.84%
Downside Standard Deviation	4.08%	7.26%
Sharpe Ratio (RFR=1.75%)	1.00	0.48
Sortino Ratio (RFR=1.75%)	2.15	0.78
Correlation vs TSX	49.25%	100.00%
Beta Coefficient to TSX	0.37	1.00
Jensen's Alpha (RFR=1.75%)	6.71%	-
Positive Months	67.30%	64.78%
Avg. Monthly Gain	2.28%	2.49%
Avg. Monthly Loss	-2.03%	-2.71%
Avg. Upside Capture vs TSX	63.15%	100.00%
Avg. Downside Capture vs TSX	15.55%	100.00%

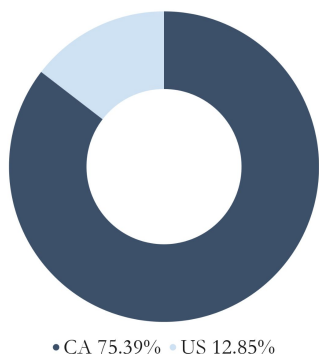
PORTFOLIO EXPOSURE



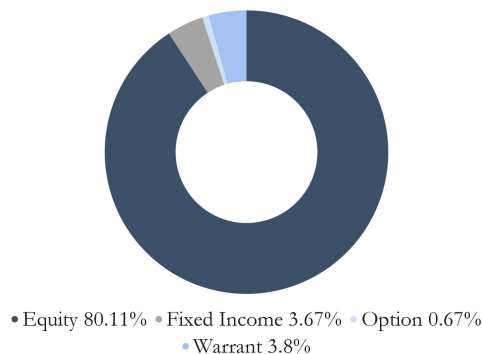
PORTFOLIO EXPOSURE BY SECTOR



GROSS PORTFOLIO EXPOSURE BY COUNTRY



GROSS PORTFOLIO EXPOSURE BY SECURITY TYPE



KEY FUND INFORMATION & TERMS

FUND STRUCTURES	Mutual Fund Trust (Canadian RRSP Feeder Fund) Limited Partnership (Canadian Feeder Fund) Cayman open-ended investment fund (Master)
ELIGIBLE CANADIAN INVESTORS	ON/AB/BC/NL/QC/SK/MB
FUNDSERV CODES	F Class NEW004 / RRSP NEW304 G Class NEW005 / RRSP NEW305
BASE CURRENCY	CAD (Hedged USD Class Available)
MINIMUM INVESTMENT	Closed to new investors
MANAGEMENT FEE	B & G Class 2% / F Class 1%
PROFIT ALLOCATION	20% above perpetual high-water mark
SUBSCRIPTIONS / REDEMPTIONS	Monthly
STRATEGY INCEPTION	July 2012
ADMINISTRATOR	SGGG Fund Services Inc.
AUDITOR	Deloitte LLP
PRIME BROKERS	CIBC World Markets BMO Capital Markets Fidelity Prime Services National Bank TD Securities Inc RBC Capital Markets

NEWGEN
 ASSET MANAGEMENT

(416) 941-9112

clientservice@newgenfunds.com

www.newgenfunds.com

NewGen Asset Management Limited

Commerce Court North, Suite 2900

25 King Street West, P.O. Box 405

Toronto, Ontario, M5L 1G3

FOOTNOTES & DISCLAIMERS

Performance data is since strategy inception (July 2012) and reported net of all fees; data prior to February 1, 2014 is for Class A – Series 1 Units from the NewGen Equity Long/Short Fund, an Exempted Company incorporated in the Cayman Islands; effective February 1, 2013 this Fund changed its base currency from USD to CAD; presentation of performance data prior to this date assumes USD hedged to CAD; the NewGen Equity Long-Short Fund LP adopted an identical investment strategy on February 1, 2014; data on and after February 1, 2014 is for Class B – Series 1 Units of the NewGen Equity Long-Short Fund LP. Most recent month of performance is an internal estimate.

Standard deviation is a form of hypothetical performance data; Sharpe Ratio, Sortino Ratio and Jensen's Alpha are hypothetical measures of excess return and we assume a risk-free rate of 1.5% in their calculations.

Exposure data prior to February 1, 2014 is from the NewGen Equity Long/Short Fund.

The TSX Composite Index and TSX Smallcap Index comparative performance is provided for illustrative purposes only – they are widely followed indices but are not considered benchmarks due to differing holding composition compared to the NewGen Equity Long-Short Fund LP. The composition of the Funds' portfolio could differ significantly from these indices due to the investment strategy employed, and includes differences such as use of short positions, varying fund net exposure, varying sector exposure, and investing in small and mid capitalization stocks. Please see "Investment Strategies" in the Confidential Offering Memorandum for more details.

This newsletter is not an offer to sell nor a solicitation of an offer to purchase interests of the Funds. The Manager reserves the right to change any terms of the offering at any time. Offers and sales of interests in the Funds will be made only pursuant to an offering memorandum, complete documentation of the relevant Fund and in accordance with the applicable securities laws, and this presentation is qualified in its entirety by reference to such documentation, including the Risk Factors and Potential Conflicts of Interest disclosure set forth therein. Past performance does not guarantee future results. The securities of NGLS LP described herein are only available in Ontario, Alberta, British Columbia, Newfoundland, Quebec and Saskatchewan pursuant to a prospectus exemptions as set out in NGLS's offering memorandum.